

# ART BASEL MIAMI BEACH

DECEMBER 2-4, 2021

BOOTH C8



**EL ANATSUI**

*Plot a Plan IV*

2007

aluminum and copper wire

83 × 99 1/2 inches (210.8 × 252.7 cm)

**MNUCHIN GALLERY**

45 EAST 78 STREET NEW YORK NY 10075 T +1.212.861.0020 F +1.212.861.7858 [MNUCHINGALLERY.COM](http://MNUCHINGALLERY.COM)





**JEAN-MICHEL BASQUIAT**

*Batman*

1983

oilstick on paper

22 × 29 7/8 inches (55.9 × 75.9 cm)

signed and dated 1983 Jean-Michel Basquiat (verso)

**MNUCHIN GALLERY**

45 EAST 78 STREET NEW YORK NY 10075 T +1.212.861.0020 F +1.212.861.7858 [MNUCHINGALLERY.COM](http://MNUCHINGALLERY.COM)



**LYNDA BENGLIS**

*Vauxhall*

1986

bronze wire mesh, sprayed zinc, copper  
and nickel-chrome plating

57 x 29 x 7 inches (144.8 x 73.7 x 17.8 cm)

**MNUCHIN GALLERY**

45 EAST 78 STREET NEW YORK NY 10075 T +1.212.861.0020 F +1.212.861.7858 [MNUCHINGALLERY.COM](http://MNUCHINGALLERY.COM)



**FRANK BOWLING**

*Noon Light*

1978

acrylic on canvas

66 1/4 × 33 3/4 inches (168.3 × 85.7 cm)

**SOLD**

**MNUCHIN GALLERY**

45 EAST 78 STREET NEW YORK NY 10075 T +1.212.861.0020 F +1.212.861.7858 [MNUCHINGALLERY.COM](http://MNUCHINGALLERY.COM)





**JOHN CHAMBERLAIN**

*Los Ang Us*

1988

painted and chromium-plated steel, wall leaning

96 × 41 × 33 inches (243.8 × 119.4 × 83.8 cm)

**MNUCHIN GALLERY**

45 EAST 78 STREET NEW YORK NY 10075 T +1.212.861.0020 F +1.212.861.7858 [MNUCHINGALLERY.COM](http://MNUCHINGALLERY.COM)



**ED CLARK**

*Red Head*

1967

acrylic on burlap

48 × 72 inches (121.9 × 182.9 cm)

signed and dated *Clark 67* (lower left);

signed and dated again, titled "TITLE"

*RED HEAD Clark April 67* (verso)

**SOLD**

**MNUCHIN GALLERY**

45 EAST 78 STREET NEW YORK NY 10075 T +1.212.861.0020 F +1.212.861.7858 MNUCHINGALLERY.COM



**ED CLARK**

*The Tilt*

2006

acrylic on canvas

40 × 30 inches (101.6 × 76.2 cm)

signed and dated Ed Clark 2006 (verso)

**MNUCHIN GALLERY**

45 EAST 78 STREET NEW YORK NY 10075 T +1.212.861.0020 F +1.212.861.7858 [MNUCHINGALLERY.COM](http://MNUCHINGALLERY.COM)





**NOAH DAVIS**

*Prey*

2010

oil on wood panel with silver leaf

60 × 84 inches (152.4 × 213.4 cm)

**MNUCHIN GALLERY**

45 EAST 78 STREET NEW YORK NY 10075 T +1.212.861.0020 F +1.212.861.7858 [MNUCHINGALLERY.COM](http://MNUCHINGALLERY.COM)



**SAM GILLIAM**

*Think So*

1967

acrylic on canvas

36 × 36 inches (91.4 × 91.4 cm)

signed, titled and dated (on the overlap)

**MNUCHIN GALLERY**

45 EAST 78 STREET NEW YORK NY 10075 T +1.212.861.0020 F +1.212.861.7858 [MNUCHINGALLERY.COM](http://MNUCHINGALLERY.COM)



**MARK GROTJAHN**  
*Untitled (Black/Cream)*  
2004  
colored pencil on paper  
17 × 14 inches (43.2 × 35.6cm)  
signed and dated (verso)





**PHILIP GUSTON**

*The Day*

1964

oil on canvas

77 × 80 inches (195.5 × 203.2 cm)

signed, titled and dated *Philip Guston*

*The Day 1964* (on reverse)

**MNUCHIN GALLERY**

45 EAST 78 STREET NEW YORK NY 10075 T +1.212.861.0020 F +1.212.861.7858 [MNUCHINGALLERY.COM](http://MNUCHINGALLERY.COM)



**DAVID HAMMONS**

*Orange is the New Black*

2015

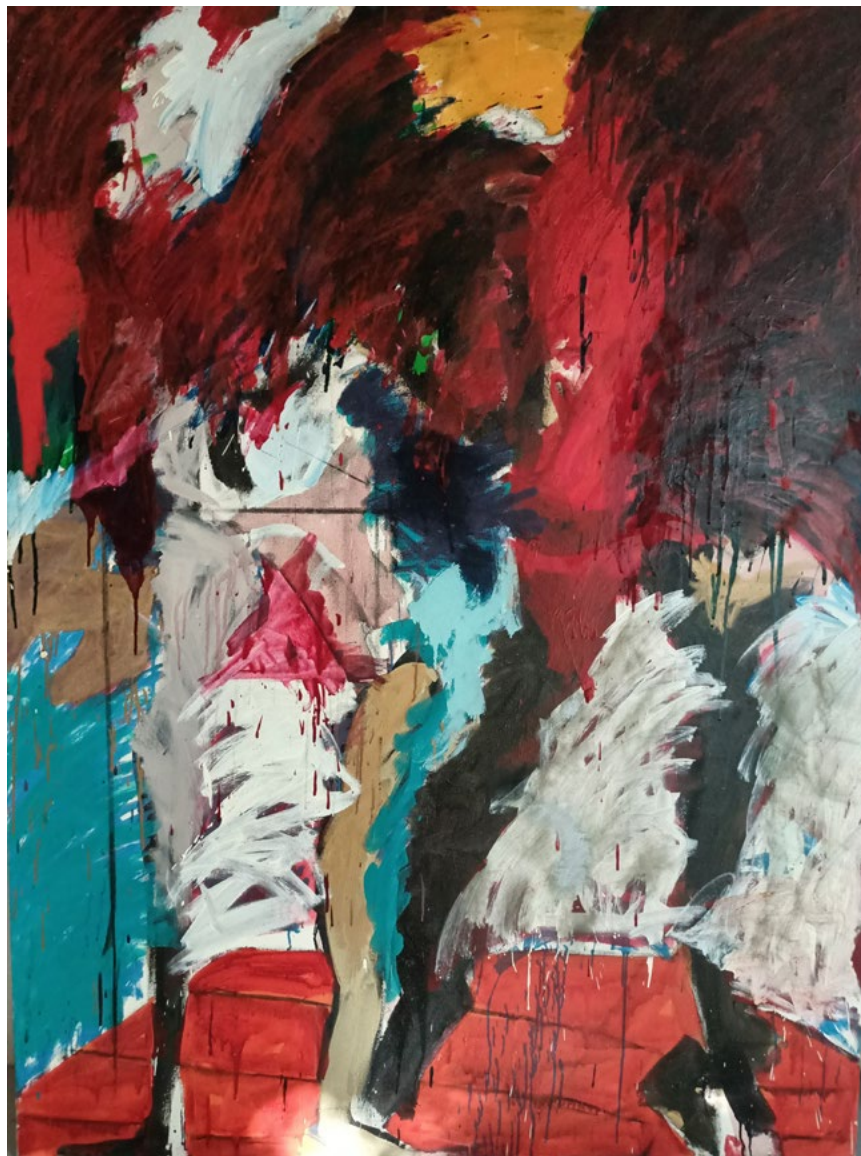
wood, metal, natural fibers, acrylic

24 ¼ × 9 ½ × 8 inches (61.6 × 24.1 × 20.3 cm)

signed and dated Hammons 2015 (verso)

**MNUCHIN GALLERY**

45 EAST 78 STREET NEW YORK NY 10075 T +1.212.861.0020 F +1.212.861.7858 [MNUCHINGALLERY.COM](http://MNUCHINGALLERY.COM)



**MARY LOVELACE O'NEAL**

*Juke Joint*

1980/1982

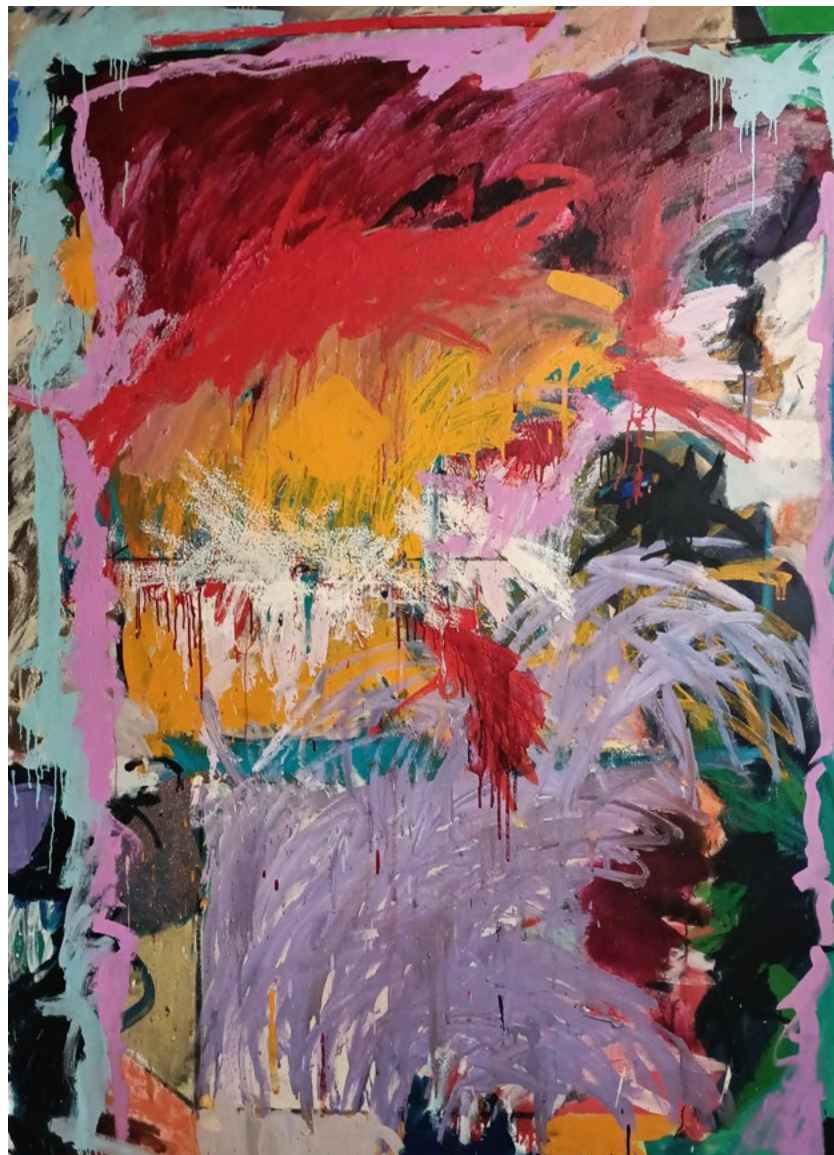
acrylic and mixed media on canvas

84 × 60 inches (213.4 × 152.4 cm)

**MNUCHIN GALLERY**

45 EAST 78 STREET NEW YORK NY 10075 T +1.212.861.0020 F +1.212.861.7858 [MNUCHINGALLERY.COM](http://MNUCHINGALLERY.COM)





**MARY LOVELACE O'NEAL**

*Pagan Babies for Lovelatch aka Sylvia*

1984

acrylic and mixed media on canvas

84 × 60 inches (213.4 × 152.4 cm)

ON RESERVE

**MNUCHIN GALLERY**

45 EAST 78 STREET NEW YORK NY 10075 T +1.212.861.0020 F +1.212.861.7858 [MNUCHINGALLERY.COM](http://MNUCHINGALLERY.COM)



**PABLO PICASSO**

*Nus, Tête d'Homme et Personnage Assis*

1969

ink and colored pencil on paper

23 × 31½ inches (58.4 × 80 cm)

dated (from left): 6.5.69; 4.5.69; 7.5.69; 13.5.69; signed *Picasso* (upper right)

**MNUCHIN GALLERY**

45 EAST 78 STREET NEW YORK NY 10075 T +1.212.861.0020 F +1.212.861.7858 MNUCHINGALLERY.COM





**PABLO PICASSO**

*Tête*

June 29, 1972

india ink wash and gouache on paper

25 7/8 × 19 3/4 inches (65.7 × 50.2 cm)

signed *Picasso* (lower left); dated 29.6.72 (verso)





**MARK ROTHKO**

*Untitled (Brown and Black)*

1968

acrylic on paper mounted on board

33 1/4 x 25 3/4 inches (84.5 x 65.4 cm)

**MNUCHIN GALLERY**

45 EAST 78 STREET NEW YORK NY 10075 T +1.212.861.0020 F +1.212.861.7858 [MNUCHINGALLERY.COM](http://MNUCHINGALLERY.COM)



**ANNE TRUITT**

*Foreign Shore*

1979

acrylic on canvas

8 1/8 × 34 1/8 inches (20.6 × 86.7 cm)

signed, titled and dated FOREIGN SHORE Truitt 79 (verso)

**MNUCHIN GALLERY**

45 EAST 78 STREET NEW YORK NY 10075 T +1.212.861.0020 F +1.212.861.7858 [MNUCHINGALLERY.COM](http://MNUCHINGALLERY.COM)



**ANDY WARHOL**

*Mao*

1973

acrylic and silkscreen ink on canvas

26 1/8 x 22 inches (66.4 x 55.9 cm)

signed and dated Andy Warhol 73 (on the overlap)

**MNUCHIN GALLERY**

45 EAST 78 STREET NEW YORK NY 10075 T +1.212.861.0020 F +1.212.861.7858 [MNUCHINGALLERY.COM](http://MNUCHINGALLERY.COM)





**JACK WHITTEN**

*Barney's Legacy II*

1980

acrylic and paint collage on canvas

78 ½ × 107 inches (199.4 × 271.8 cm)

signed, titled, and dated 1980 (verso)

**MNUCHIN GALLERY**

45 EAST 78 STREET NEW YORK NY 10075 T +1.212.861.0020 F +1.212.861.7858 [MNUCHINGALLERY.COM](http://MNUCHINGALLERY.COM)